

# Use Case

# Dry Van

## Importance of Dry Van Tracking

Dry vans are trailers used to transport most goods to their storage or distribution locations. As these goods usually don't have distinct condition requirements, it can be easy to assume they don't need to be monitored. However, these goods can still be damaged or stolen, and it's important to have a reliable record of what cargo is traveling with what trailer. Through asset tracking, you can achieve these goals and more.

## Benefits of Implementing RTLS to Dry Van Tracking



Maintain Visibility of Product Units



Optimize Supply Chain Flow



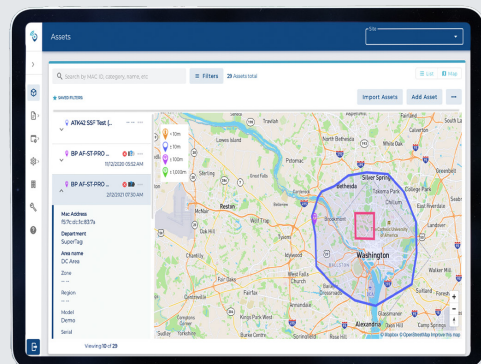
Improve Delivery Forecasting



Monitor Shock and Other Product Conditions



Reduce Tampering and Theft





# Dry Van Tracking Use Case Example

## The Challenge

### Scenario

A logistics company is trying to improve their reliability in order to improve their reputation with customers. They're generally consistent in making deliveries, but they have started to experience instances where products end up at the wrong location or are damaged in transit. They need a way to ensure that the right cargo is delivered to the right location without sustaining lasting damage.

### Key Needs

Generate records of what cargo is traveling with what trailer and receive alerts when pallets and products sustain trauma

## Link Labs Solution

Link Labs offers a trailer tracking solution that can provide custody records for cargo and shock alerts when cargo is disturbed. With this solution, the logistics company from the example can set up digital boundaries around their facility. When a trailer leaves the site, it will be triggered to report what it's carrying and what truck it's with, allowing fleet managers to verify that the right products are leaving for the right destination. Once on the road, drivers can receive alerts when products experience trauma, allowing them to address changes in status before the products sustain lasting damage. Through these efforts, they can build a reputation for on-time delivery for quality products.

**Book a demo to get started**  
**[link-labs.com/demo-request](https://link-labs.com/demo-request)**