

Use Case Dwell Time

The Importance of Dwell Time Monitoring

It's important for companies to monitor trailer dwell time so they can make adjustments to reduce detention times and optimize asset utilization. When companies monitor their dwell times, they are equipped to make decisions to improve productivity.

The Benefits of Using RTLS for Dwell Time Monitoring

An RTLS solution provides companies with real-time location monitoring of their trailers. This system tells you how long a trailer sits idle so companies can use the data to make decisions on how to improve operations. Some changes you can make with this data include:



Optimize Fuel Consumption



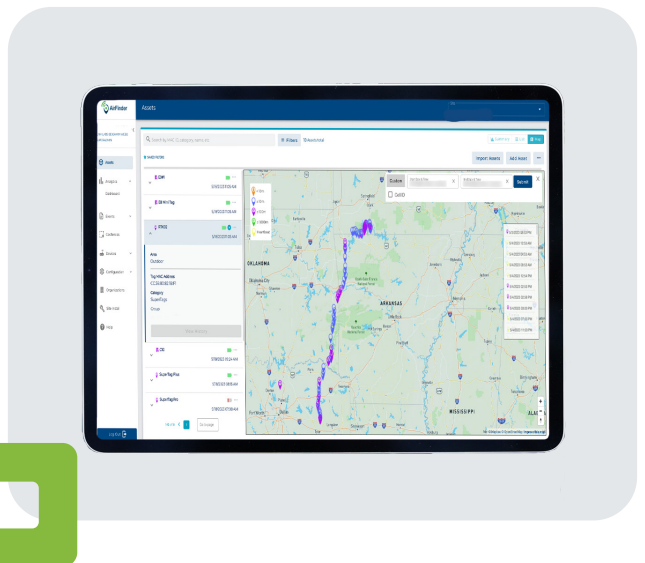
Optimize Asset Utilization



Decrease Detention Time



Decrease Bottlenecks





Dwell Time Monitoring Use Case

The Challenge

Scenario

A company was paying high fees due to extended detention times. They started looking for a way they could monitor dwell times more closely so they could take steps to reduce detention times.

Key Needs

An automated solution to monitor dwell time.

Link Labs Solution

Our solution tracks a trailer's location at all times. This company was able to use our solution to determine how long their trailers spent idle, determine why dwell times were so long, and make changes to processes to decrease the dwell time. Because of our AirFinder solution, this company was able to decrease the amount of money they had to spend on detention time fees.

Book a demo to get started
link-labs.com/demo-request