

Use Case

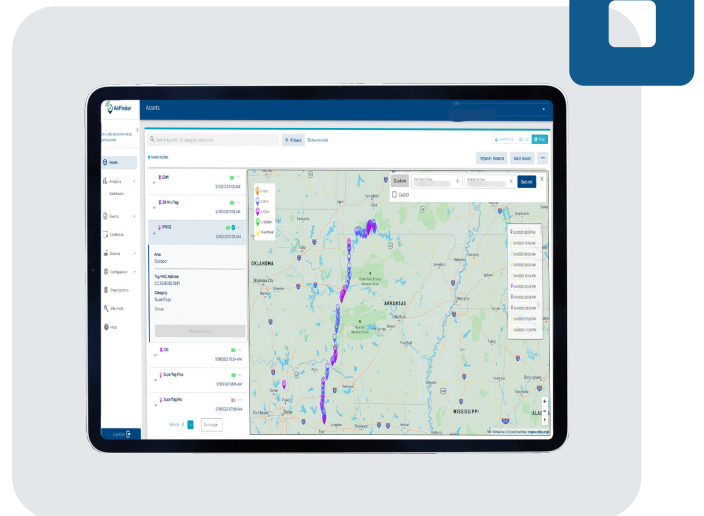
Flatbed Tracking

Importance of Flatbed Tracking

The tracking of flatbed trailers plays a vital role in enhancing operational efficiency and ensuring the security of valuable assets during transportation. With the ability to monitor and trace assets in real time, flatbed tracking systems provide valuable insight into the location, condition, and status of your trailers and shipments.

Benefits of Implementing RTLS for Flatbed Tracking

By integrating an asset tracking system as a flatbed tracking solution, your company will be equipped to better ensure the efficient and secure transport of your valuable goods. By leveraging the power of our flatbed trackers, you can:



Ensure safe and timely deliveries



Optimize routes



Minimize idle time



Optimize fleet operations



Reduce costs



Streamline supply chain operations



Ensure safety and security



Flatbed Tracking Use Case

The Challenge

Scenario

A leading provider of construction services heavily relies on transporting various materials and equipment using a fleet of flatbed trailers. They are looking for a way to improve operational efficiency and ensure the security of their valuable assets.

Key Needs

Real-time visibility to ensure safe delivery of flatbed trailers

Link Labs Solution

By integrating Link Labs' AirFinder Everywhere solution, this construction company gained real-time visibility into the location and status of their trailers during transportation. They can now track the movements of the fleet, ensuring that they are on the correct routes and reaching the designated construction sites on time. This has shown to help the company optimize logistics planning, streamline operations, and meet project deadlines more effectively.

Book a demo to get started
link-labs.com/demo-request