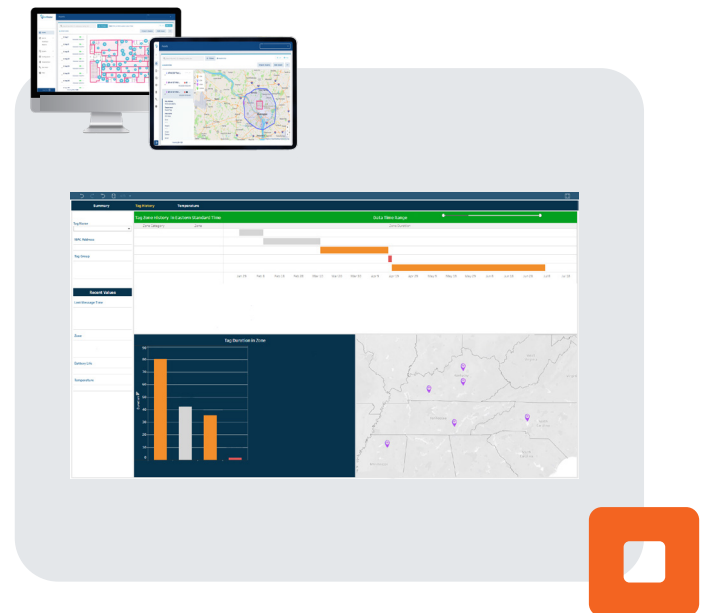


SUPERTAG HUB

Connection Point for Surrounding Asset Tags

Why SuperTag Hub?

- ✓ **Affordable** solution
- ✓ Set up in **minutes**
- ✓ Utilizes smaller tags at a **lower cost**
- ✓ Track up to **128 items**
- ✓ **Visualize** asset data via MQTT & API integrations
- ✓ **Track** custody of smaller items over the road



Use Cases



Equipment & tool tracking



Process Efficiencies



Inventory Management



Seamless indoor to outdoor asset tracking



Loss Prevention



Compliance

Implementing SuperTag Hub Into Your Operations

How it Works

SuperTag Hub is an easy to implement and affordable solution to help customers begin tracking and monitoring their assets in real time.

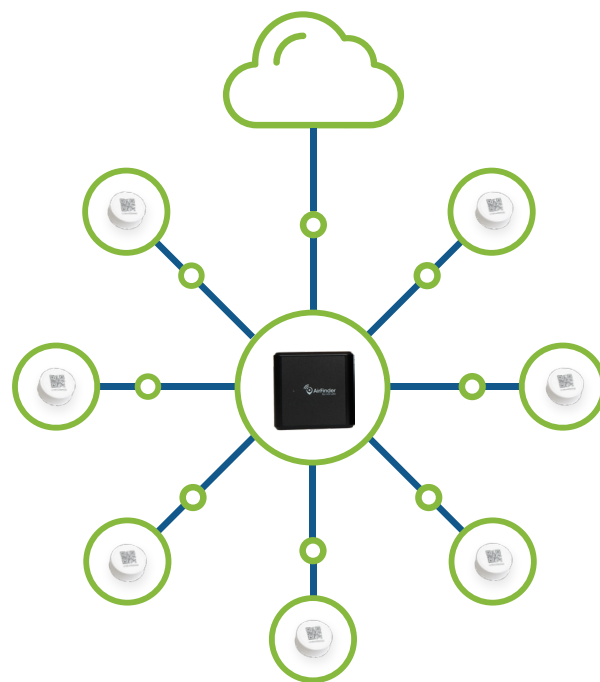
Each tag can be set to update when it detects movement and at a given frequency while in motion. The user can also choose how often the tags update when there's no movement. Enable geofences to trigger alerts when the tag is leaving a zone, moving into a zone, or moving between zones. With SuperTag Hub, companies can see the location and conditions of their assets in real time whether they're indoors or outdoors at a low cost.

Asset Tracking Technology

Link Labs' Bluetooth LE devices were designed to only track assets indoors. In the traditional setup, location monitoring stops once a tagged asset leaves the site. But with SuperTag Hub, users avoid any loss that may happen while assets travel from one site to another. It scans the area for Bluetooth LE tags, so you'll find out if a tagged asset is present or not.

Platform Integrations

The data from the SuperTag Hub and the BLE tags can easily pair with other platforms through its robust API and MQTT streams, enabling seamless data exchange and interoperability with a wide range of systems. By leveraging its flexible architecture, our solution can efficiently integrate with various telematics platforms, cloud services, and analytics tools to optimize data management and insights for your business.



TO GET STARTED

BOOK A DEMO



E7



E8



E9



S1