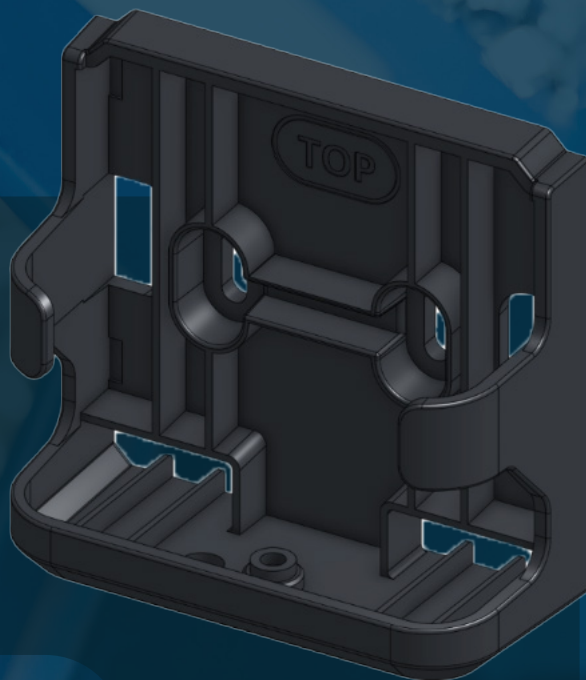


AIRFINDER

SUPERTAG PRO BRACKET



PRODUCT OVERVIEW

The LL-AF2-SM-ATK02MB is a mounting bracket for our patented AirFinder SuperTag Pro asset tracker. This bracket comes with a rugged design for securing the SuperTag Pro to a variety of surfaces, both mobile and stationary. Customers may use screws, zip ties, or tapes as mounting options depending on the required durability and permanence.

KEY FEATURES



Rugged durability



Easy to use



Variety of mounting options

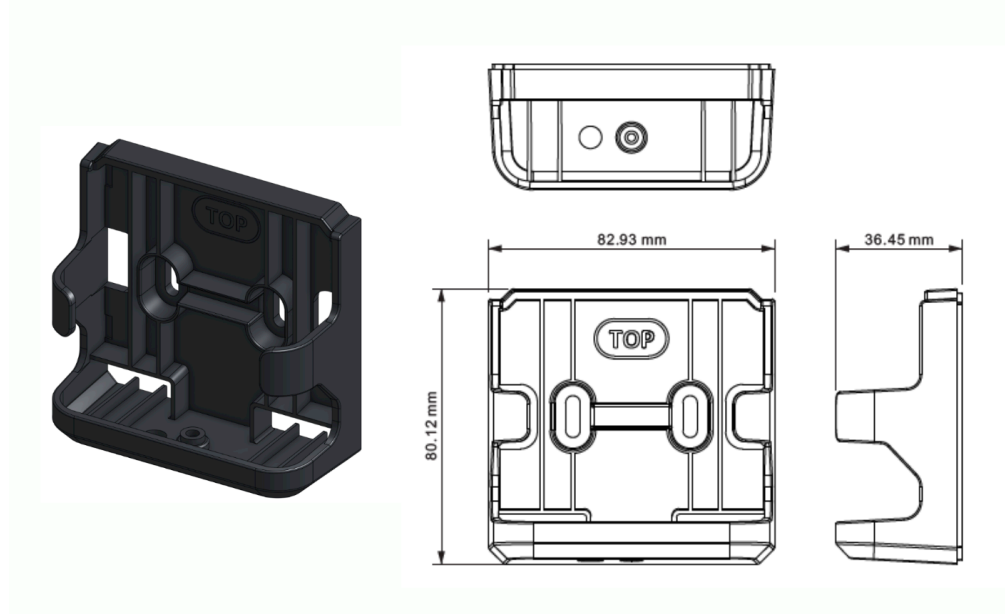


Ideal for industrial settings

SPECS INFO

BASIC SPECIFICATIONS

Dimensions 80 x 83 x 36.5 mm



FOLLOW US!



ORDERING INFO

sales@link-labs.com
1.202.524.1390

USE CASE APPLICATION



Trailer Tracking

This bracket can be used within trailer tracking applications to affix the SuperTag to your trailer. This keeps the SuperTag in place during transit, and allows it to act as a permanent fixture within the trailer. Mounted with screws, it can be trusted to stay in place and endure the challenges of the road.



Equipment Tracking

When large equipment is regularly transported between remote locations, you need a way to retain location information. By using this bracket, you can keep a SuperTag permanently affixed to your mobile assets so you never lose sight of them when they're offsite. Alternatively, the bracket can easily be removed and reaffixed if you only want the SuperTag in place when the equipment leaves the premises.

PRODUCT IMAGES

