

Use Case

Logistics Waste Management

Importance of Waste Management

Waste management is an important piece of sustainability. Properly managed waste helps to streamline the waste collection process and improve resource allocation. Effective waste management helps reduce the release of harmful substances into the environment, preventing pollution. By properly segregating and disposing of waste, the risks of contamination can be minimized.

Benefits of Implementing RTLS for Waste Management

Implementing RTLS as part of your waste management plan allows you to ensure you are properly disposing of your waste. In the past, manual methods like spreadsheets or pen and paper were used but found to be unreliable. Instead, automating parts of your process allows you to make improvements you didn't know you could. Some benefits of RTLS for waste management include:



Optimize routing



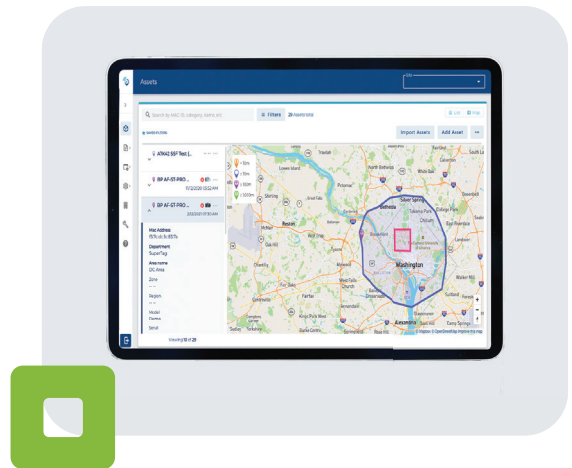
Receive alerts with geofencing



Achieve regulatory compliance



Improve data collection and analytics





Waste Management Use Case

The Challenge

Scenario

A waste management company was looking for a way to optimize its operations. They have a lot of dumpsters on their routes to pick up and want to do it as quickly as possible without increasing fuel costs.

Key Needs

Visibility of garbage trucks

Link Labs Solution

Link Labs' solution provides real-time visibility of garbage trucks. With the data the AirFinder solution provides, waste management companies can gain insight into their truck routes and can make decisions to improve the routes. Even more, AirFinder helped companies utilize their resources better, reducing costs and improving sustainability.

Book a demo to get started

link-labs.com/demo-request